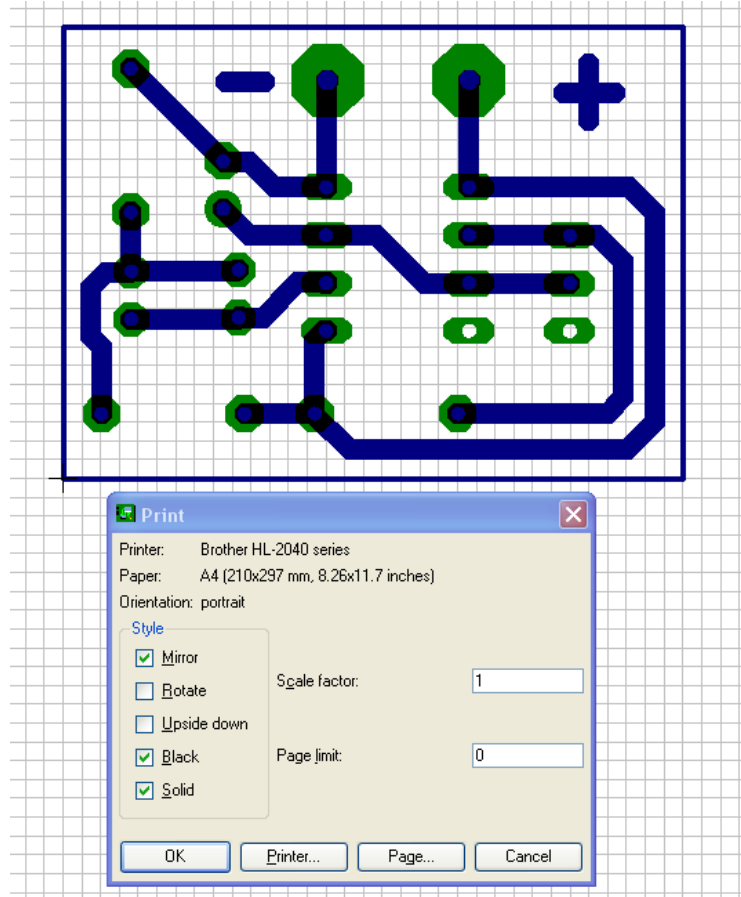
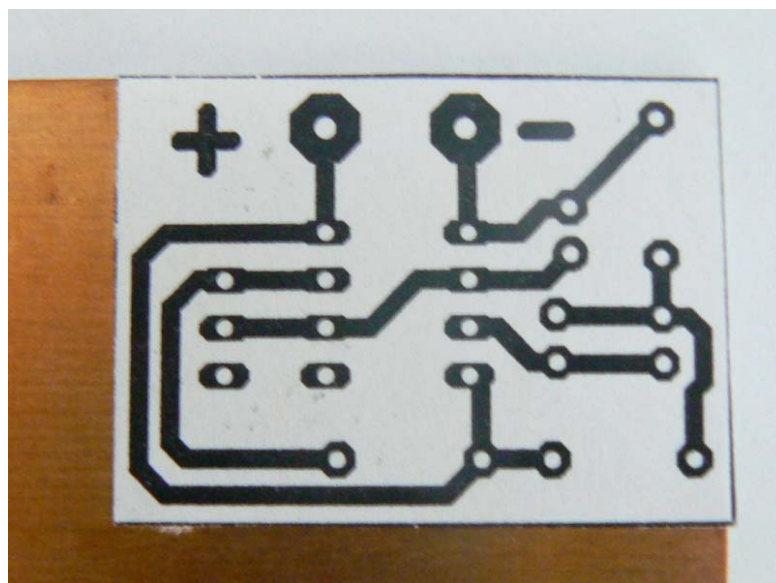


Printed circuit board with IEBPA etch-resist pen

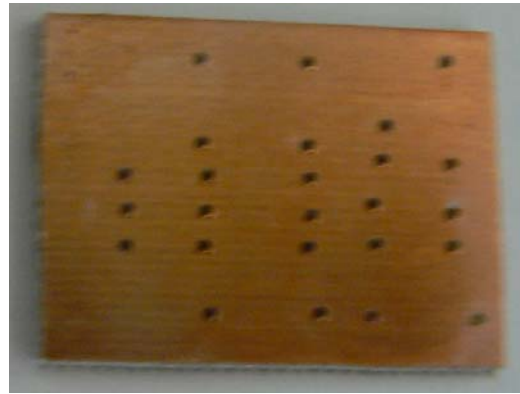
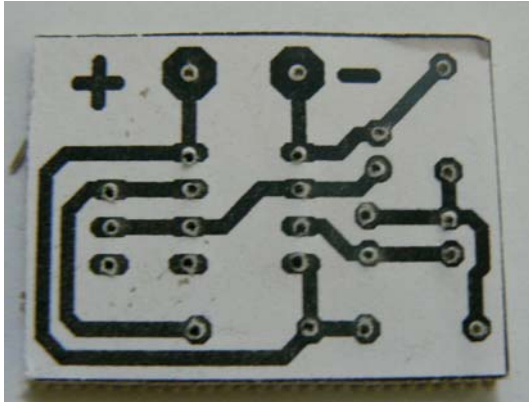
1. Print the circuit from the editor in mirror image and actual size:



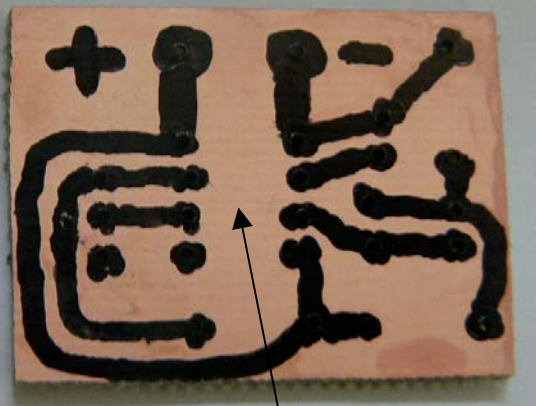
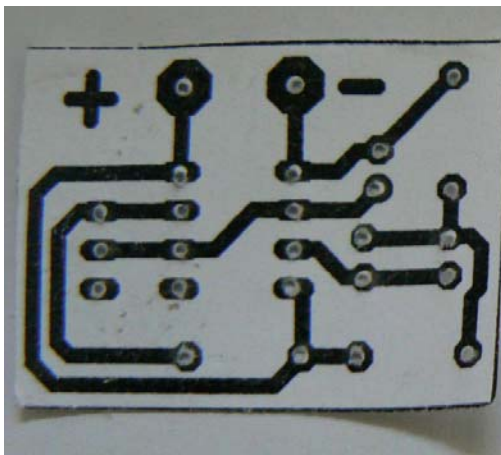
2. Past it onto a corner of blank copper clad PCB board with glue stick:



3. Drill the holes with 0.8mm or 1mm drill and cut out the board:

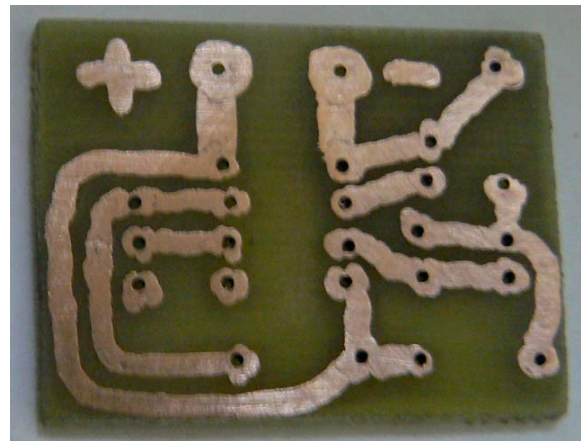
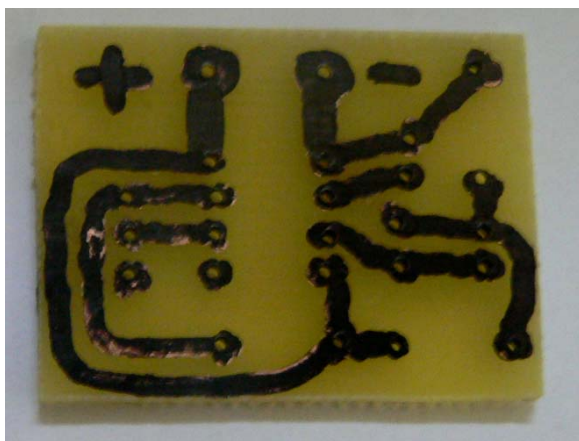


4. Peel off the paper artwork and copy it onto the PCB using the etch-resist pen:



Oops, missed a bit!

5. Etch the board and sand off the etch-resist:



6. Solder the components (and jumper the missed bit!)

