

**NOTE:** Please read and follow these installation instructions carefully, and always work within the guidelines of your screen manufacturer. Assembly and fitting should be performed by a capable installer at their own risk. We are not liable for any damage caused by improper installation.




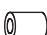
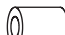













**IMPORTANT!**

- For safety reasons, the wall or mounting surface must be capable of supporting the combined weight of the mount and the display; otherwise the structure must be reinforced.
- Safety gear and proper tools must be used. A minimum of two people are required for this installation. Failure to do so can result in property damage and/or serious injury.
- Make sure that no electrical cables, water pipes or gas pipes are located within the wall.

**Tools required for the installation:**

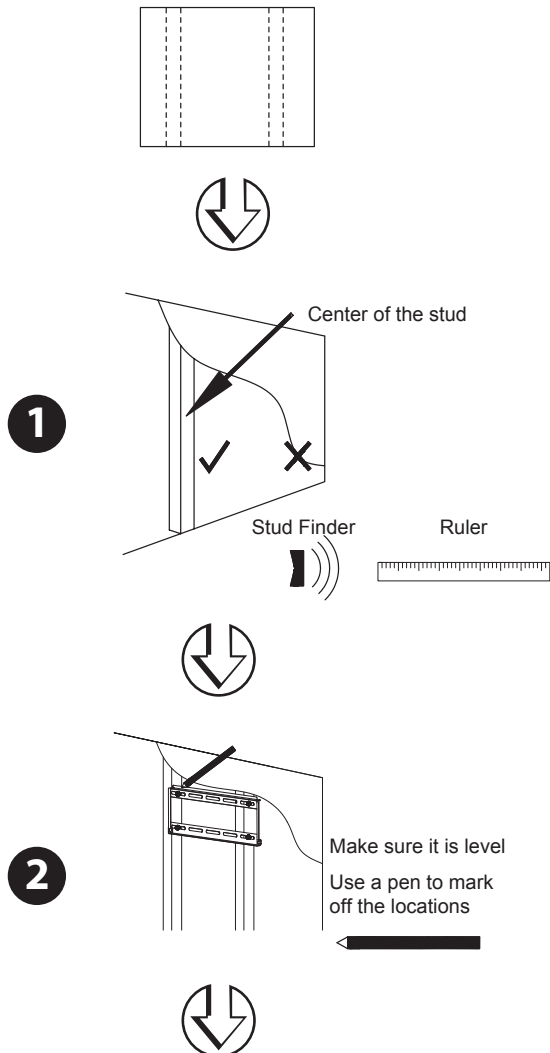
- Phillips Head Screw Driver
- Electric or Portable Drill
- Ratchet Driver with 1/2" (13 mm) Socket
- 1/4" (6 mm) Drill Bit + Stud Finder ( Drywall Installation )
- 7/16" (11 mm) Masonry Bit ( Concrete Installation )

**Also make sure that all of the hardware has been included with your mount. You should find the following:**

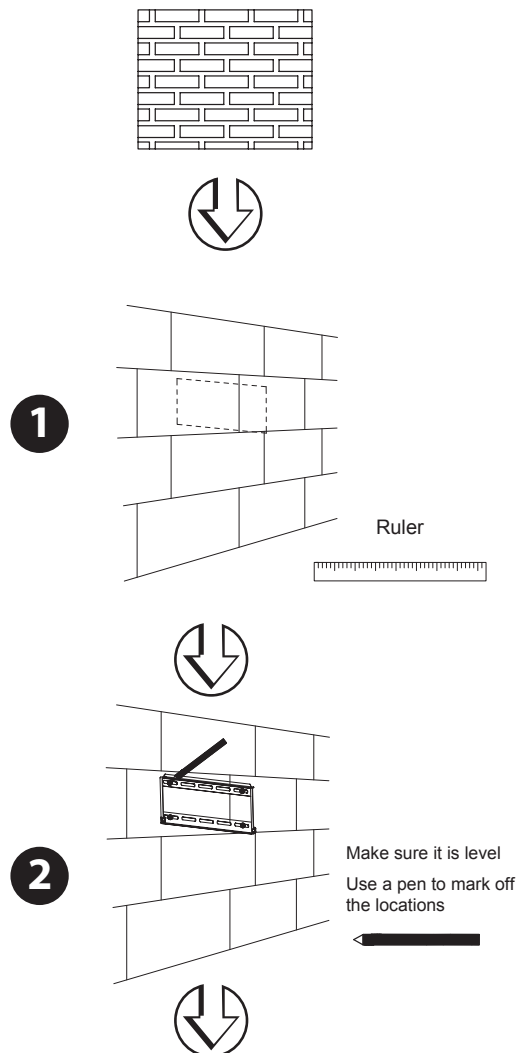
(A) M8x63 Lag Bolt	X 4		(B) Concrete Anchor	X 4		(C) Lag Bolt Washer	X 4	
(D) Small Spacer	X 4		(E) Large Spacer	X 4		(F) M6 Washer	X 4	
(G) M4x12 Bolt	X 4		(H) M4x30 Bolt	X 4		(I) M4 Lock Washer	X 4	
(J) M5x12 Bolt	X 4		(K) M5x30 Bolt	X 4		(L) M5 Lock Washer	X 4	
(M) M6x12 Bolt	X 4		(N) M6x35 Bolt	X 4		(O) M6 Lock Washer	X 4	
(P) M8x16 Bolt	X 4		(Q) M8x40 Bolt	X 4		(R) M8 Lock Washer	X 4	

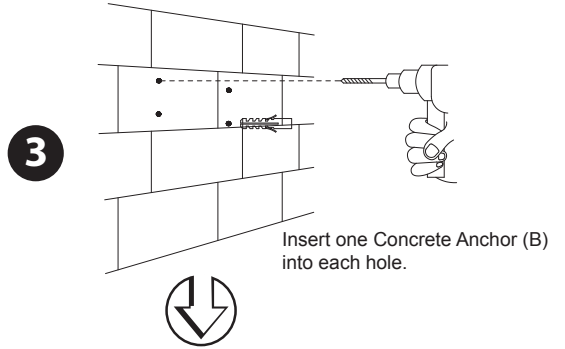
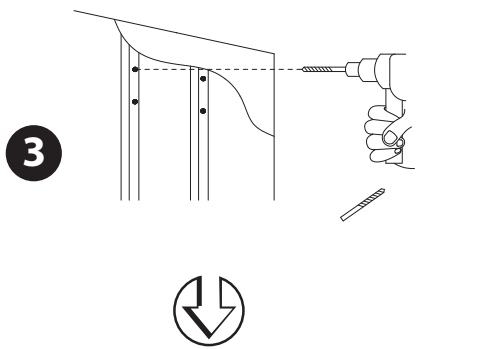
## Installing the Wall Mount

### Drywall Installation

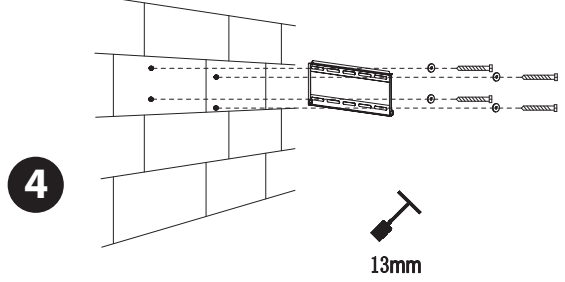
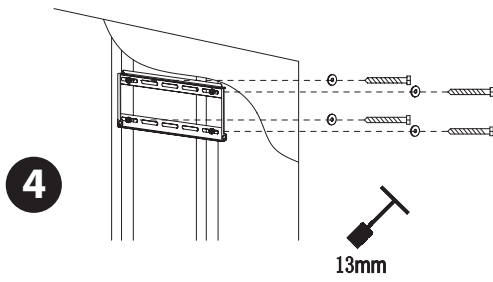


### Concrete/Brick Installation



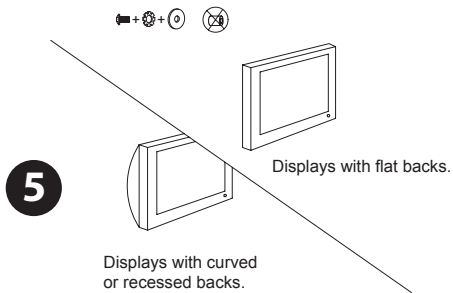


Insert one Concrete Anchor (B) into each hole.



Fix the wall plate to the wall using the Lag Bolt (C) provided.

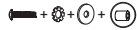
(G, J, M or P) (I, L, O or R) (F)  
Proper shorter bolts / Lock washers / Washers



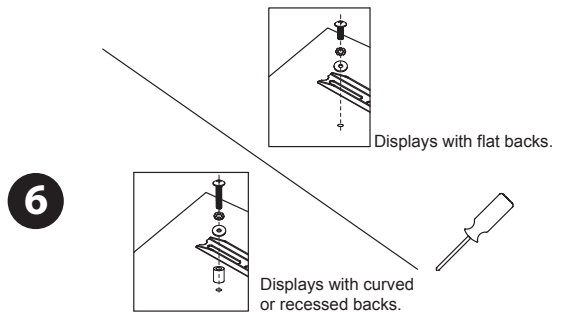
5

Displays with flat backs.

Displays with curved or recessed backs.



Proper longer bolts / Lock washers / Washers / Spacers  
(H, K, N or Q) (I, L, O or R) (F) (D or E)

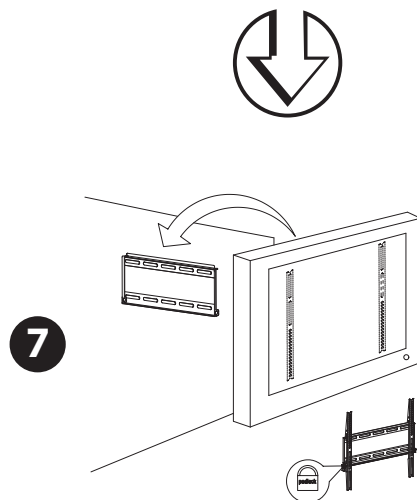


6

Displays with flat backs.

Displays with curved or recessed backs.

Do not use the M6 Washers (F) if you are using the M8 Bolts (P or Q).



7

A small padlock can be used to help prevent theft of your display.