



BEAMZ
MADE
EAZY

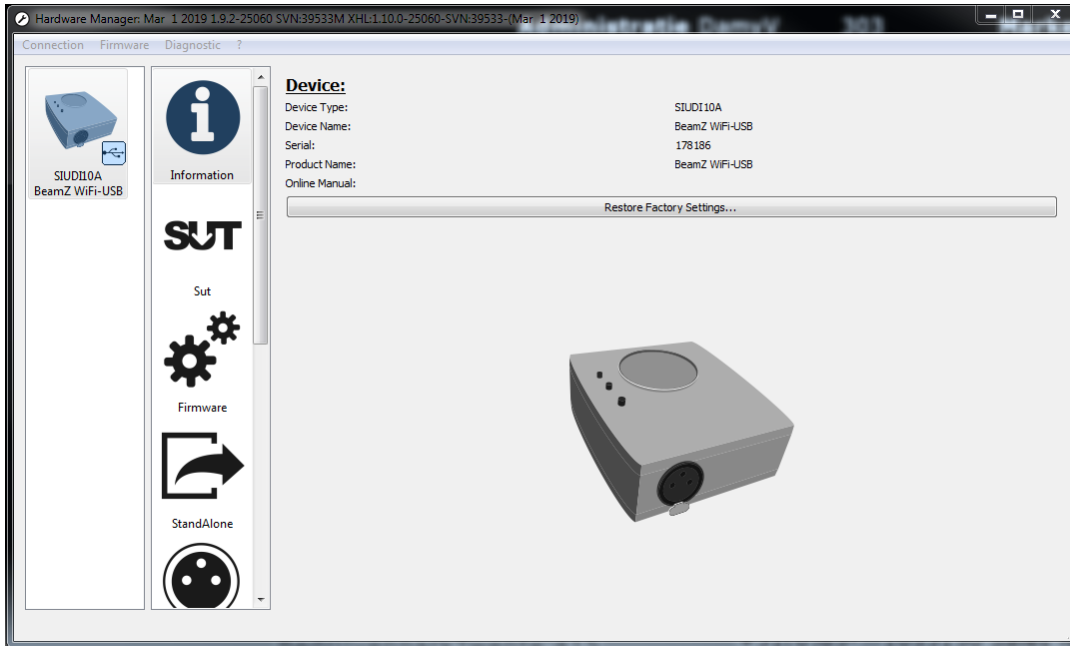
154.102_154.104 V1

ESA2 HARDWARE
QUICK **START GUIDE**

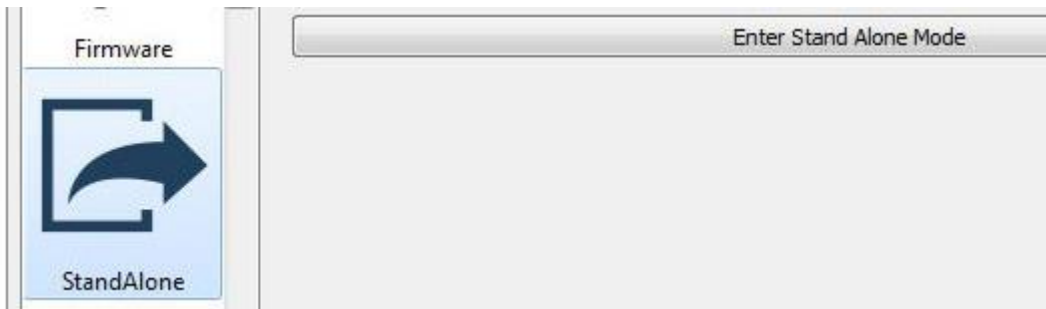
HARDWARE MANAGER

The Hardware Manager is available to help you maintain your controller.

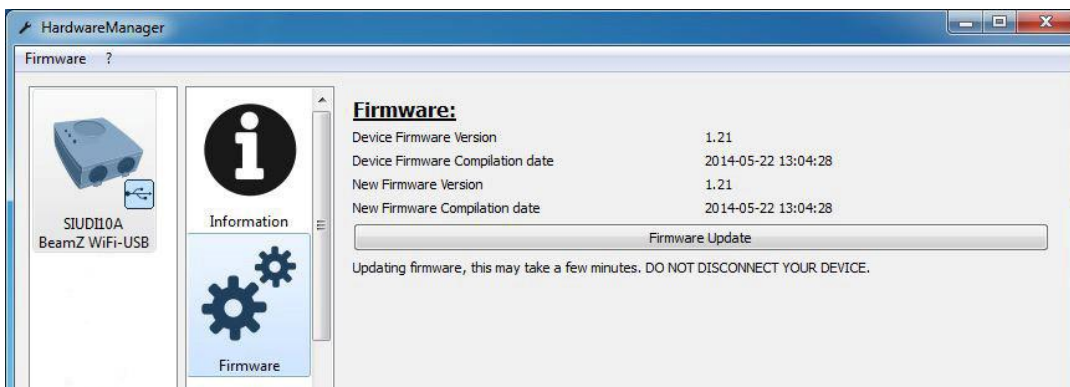
The information tab shows us which product we have connected, along with the serial number.



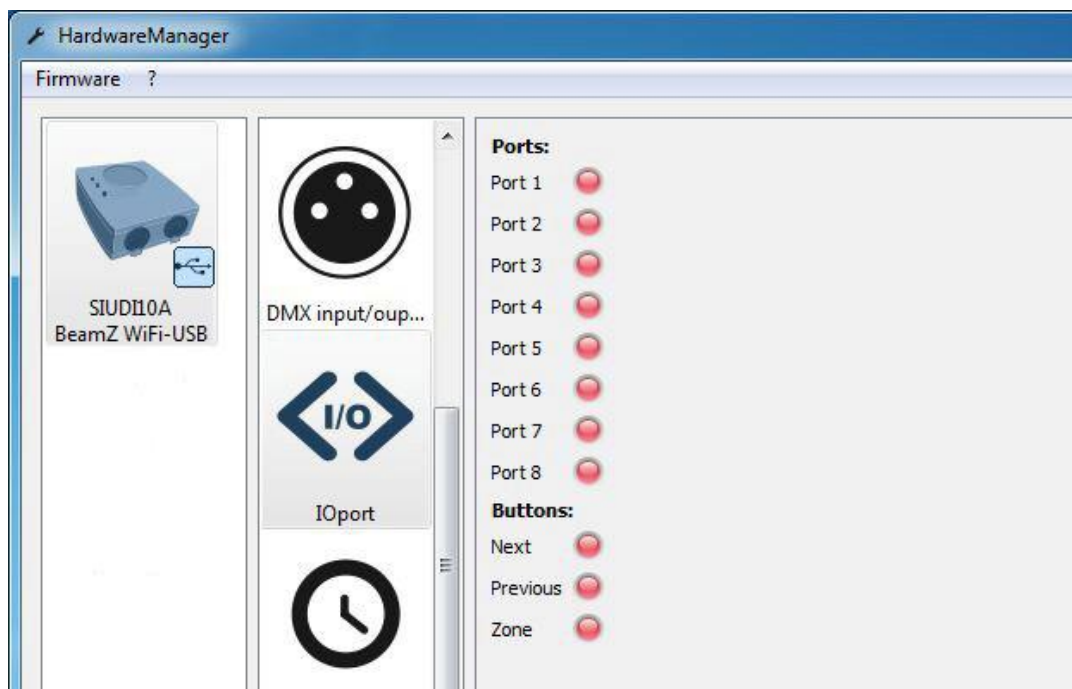
If you wish to test your product in stand alone whilst it is connected to your computer, click the stand alone tab.



The interface firmware can be updated here. The firmware is stored inside the interface and upgrading it is a common fix to a wide variety of problems.



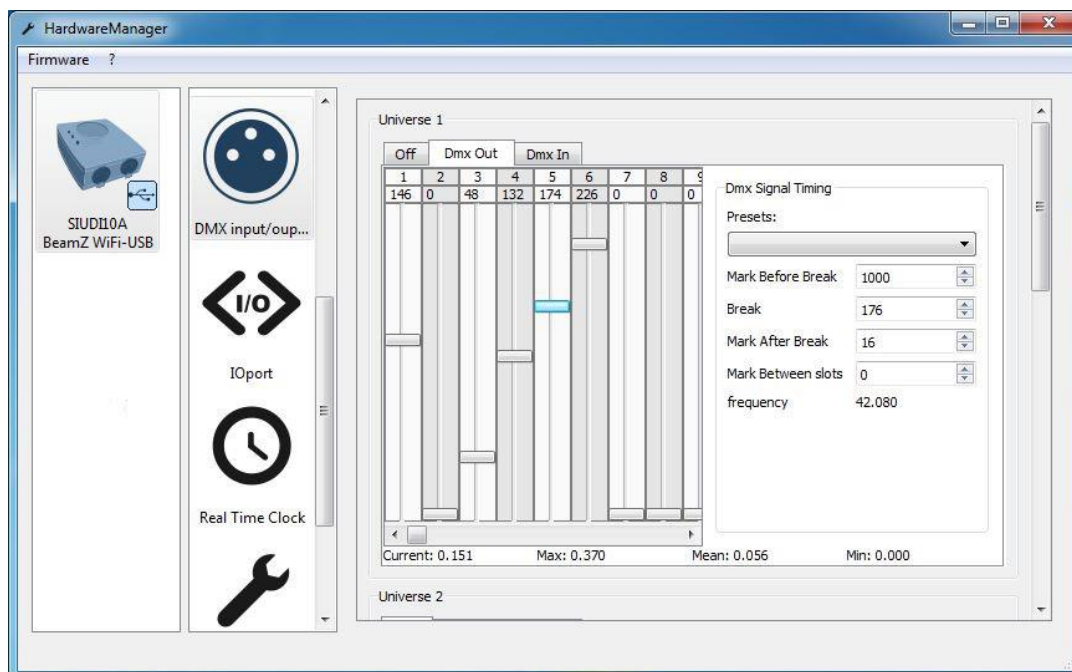
The dry contact ports and buttons can be tested here. Note that you need to be connected by USB to access this tab.



The DMX input and output can easily be tested on the "DMX Input/Output" tab. If your interface has two DMX connections, connect the output with the input.

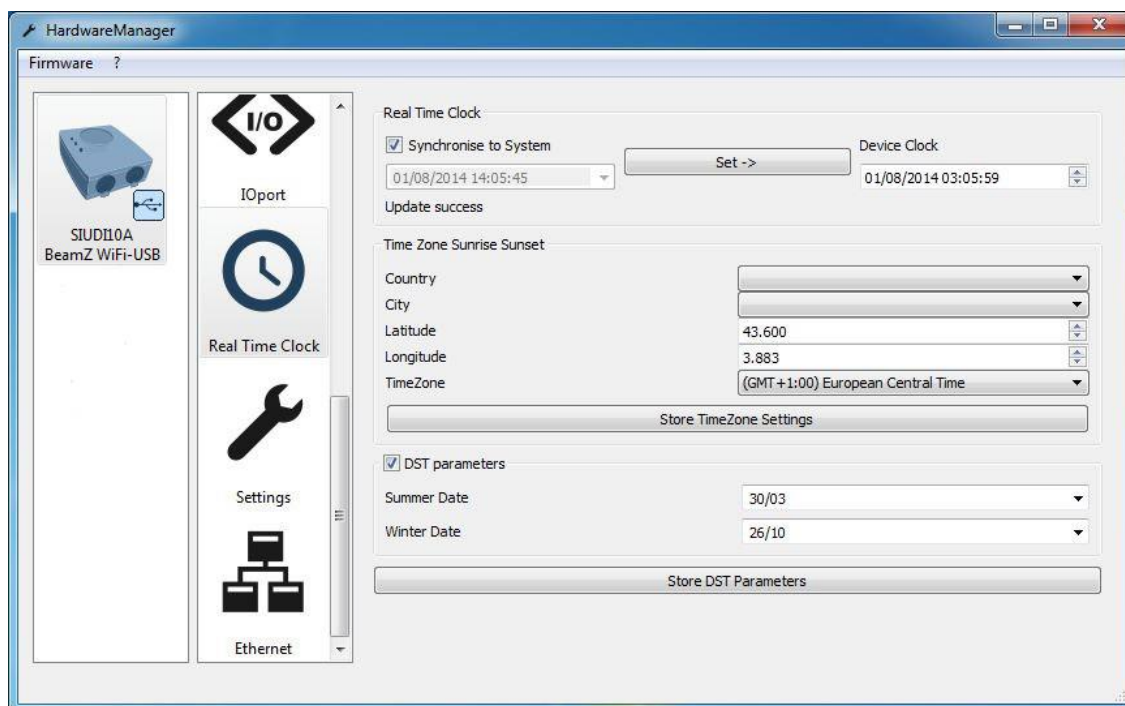
If your interface is working correctly the values on the DMX In tab should change as you move the faders on the DMX Out tab.

The DMX timings of the selected universe can be modified on the right. This allows you to change the time between each part of a DMX message to help solve compatibility problems. Selecting the 'Slow' preset can sometimes solve problems with flickering lighting fixtures.



Some interfaces have an internal clock and calendar. You can update this by synchronizing it to the Windows clock and calendar, or by selecting a custom date and time. You can also set a start and end date for the internal clock to automatically move forward one hour.

If you have a compatible interface connected, you will be able to set a location. This will allow for the triggering of scenes at Sunrise and Sunset.

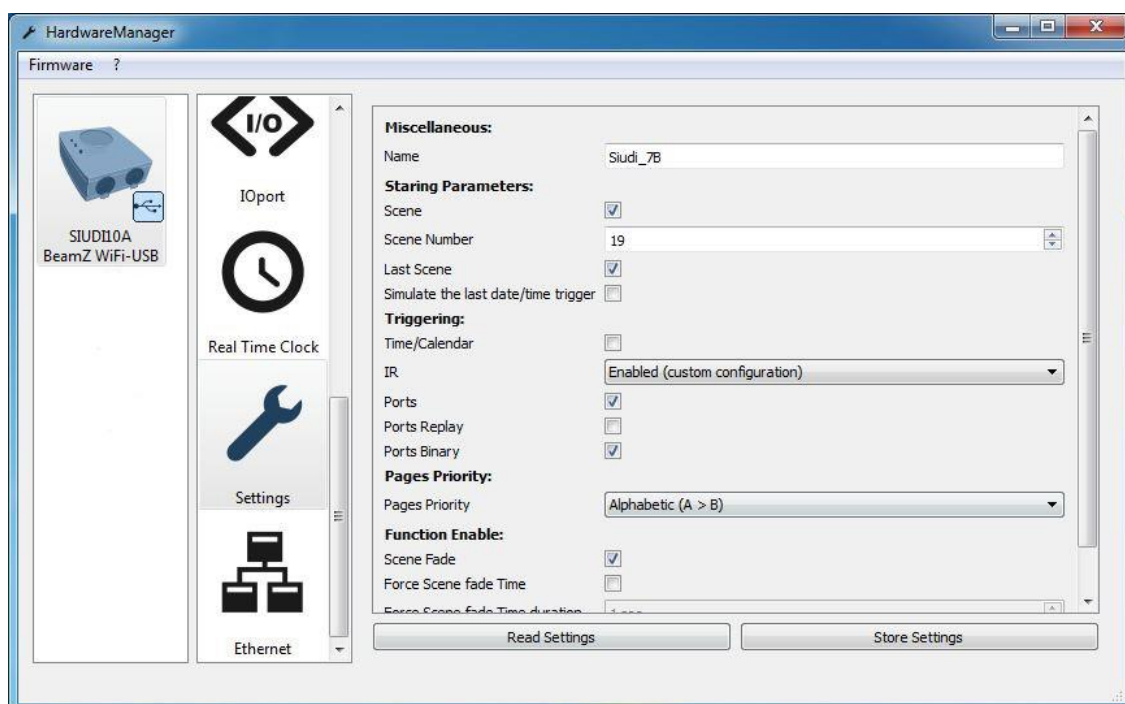


The Settings tab is where the hardware features can be set.

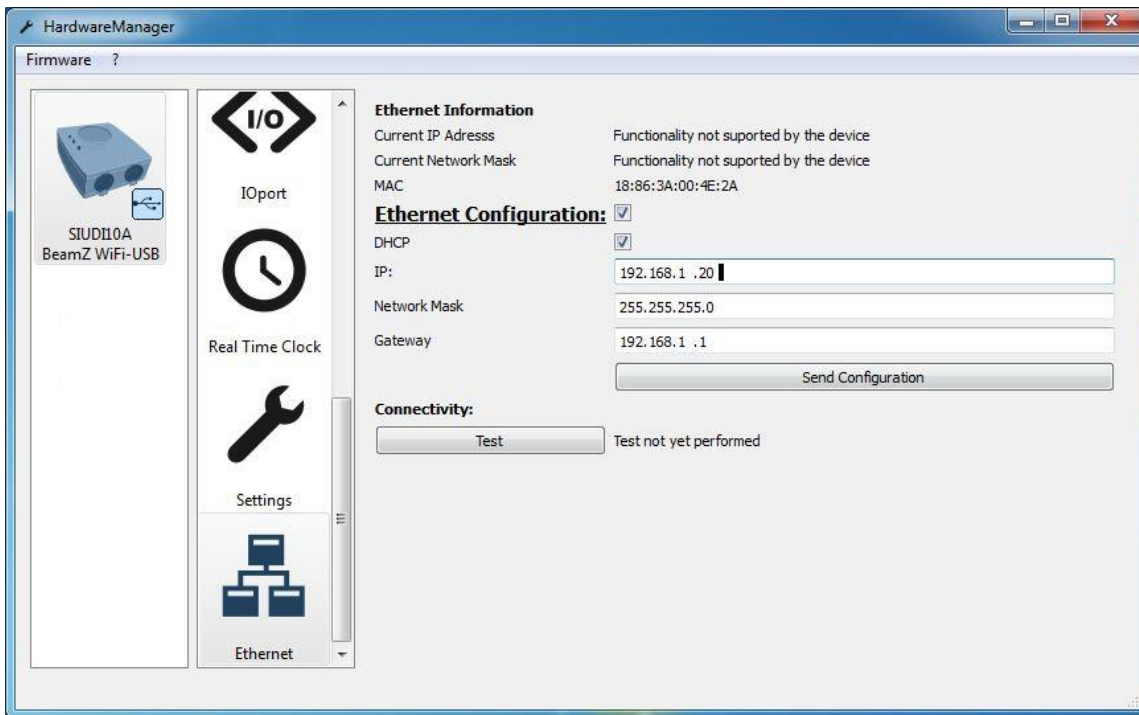
The starting parameters group allows you to set the default state of the interface when it is first switched on.

The Triggering group allows you to disable functions which are not needed or help troubleshoot a problem. If you have a device with an infra red receiver, you can enable and disable it here. 'Enabled (custom configuration)' will allow you to program your own remote (refer to the corresponding datasheet or hardware manual for more information). 'Enabled (Default Configuration)' allows you to use our official remote control.

Functions such as the Dimmer fader on the touch sensitive interfaces can be disabled within the Function Enable group. If you have a multi page interface connected, the page priorities can be changed. LTP means that the last scene you activate will always take priority over the rest. Once you have adjusted your settings, click at the bottom to send the configuration file over to the interface. Note that your interface may disconnect from the USB for a few seconds.



The Ethernet tab allows you to modify the IP address of a compatible interface and set a password. Note that you will need to connect by USB to access some of the settings.



EXTRA INFORMATION UPDATE BEAMZ WIFI-USB INTERFACE

"To confirm, the process for the firmware update in Hardware Manager is as follows:

-Download the latest version from the website:

Mac: <https://storage.googleapis.com/nicolaudie-eu-tools/Release/HardwareManager.dmg>

PC: <https://storage.googleapis.com/nicolaudie-eu-tools/Release/HardwareManager.exe>

PC Drivers: <https://storage.googleapis.com/nicolaudie-eu-tools/Release/SuidiDrivers.exe>

-Install relevant version to your operating system

-Connect your ESA2 Interface

-Launch Hardware Manager

-Select the ESA2 Interface from the list

-Select 'Info' Tab

-Select 'Restore Factory Settings'

-Select 'Firmware' tab

-Select 'Firmware Update'

-Select 'WiFi' Tab

-Select 'Restore To Default'

-Once complete, close Hardware Manager

-Disconnect and Reconnect your device to a computer/power supply to power cycle the interface."



BEAMZ

**YOUR FUTURE
YOUR SKILLS
YOUR PLATFORM
YOUR PARTY
YOUR EVENT**



is a leading developer of lighting products, including intelligent DMX moving heads, wireless battery operated DMX effects, static washes, sound-activated club effects, strobes & blacklights, LED lighting, fog and special effects machines, lasers and indoor and outdoor architectural lighting, as well as lighting controllers and protective bags.

