

## **QXBT**

### Active Speakers with Bluetooth™

Order ref: QX8BT (178.752UK)  
QX10BT (178.753UK)

User Manual

---



VERSION 1.0



Caution: Please read this manual carefully before operating  
Damage caused by misuse is not covered by the warranty

## Introduction

Thank you for choosing the QXBT active speaker with Bluetooth™ technology. This versatile active speaker can deliver playback from a paired Bluetooth device and a mic or line input source simultaneously.

## Package Contents

Please check the contents to ensure that the product has been received in good condition with the appropriate mains lead(s). If you find any accessory is missing or the product has arrived with any problems, please contact your retailer at once.

## Warning

This product contains no user-serviceable parts so make no attempt to try to fix or modify this item yourself as this will invalidate the warranty. We recommend you keep the original package and proof of purchase for any possible replacement or returned demand. To prevent the risk of fire or electric shock, do not expose this appliance to rain or moisture. To prevent electric shock do not remove the cover. No user serviceable parts inside. Refer servicing to qualified service personnel.

## Safety: Labelling Conventions



**CAUTION**  
**RISK OF ELECTRIC SHOCK**  
**DO NOT OPEN**

**AVIS**  
**RISQUE DE CHOC ELECTRIQUE**  
**NE PAS OUVRIR**



**This symbol indicates that dangerous voltage constituting a risk of electric shock is present within this unit**



**This symbol indicates that there are important operating and maintenance instructions in the literature accompanying this unit.**

Prior to connecting mains, check the supply voltage is correct and the mains lead is OK.  
Avoid ingress of water or particles into the enclosure.  
If the mains or D.C. fuse blows, refer the unit to qualified service personnel

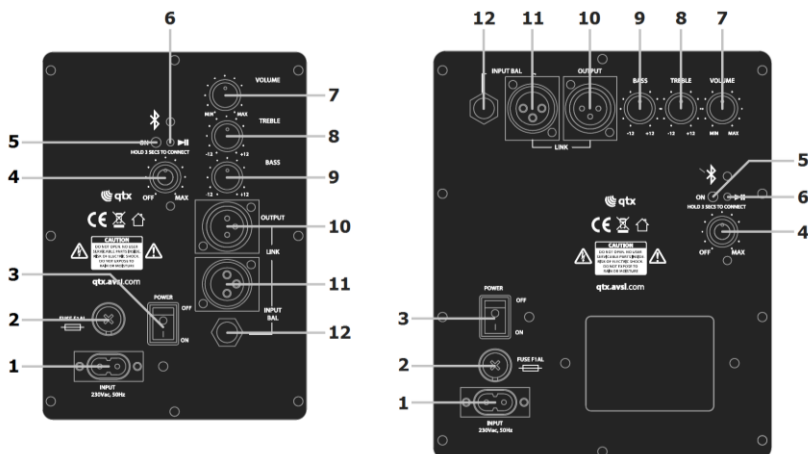
## Placement

Keep the unit out of direct sunlight and away from heat sources.  
Keep the unit away from moisture or dusty environments.  
Mount the unit on a stable surface, 35mm pole mount or suspend using the integral flying points.  
Ensure that any supporting structures have adequate load capacity for the weight of the unit.

## Cleaning

Use a soft cloth with a neutral detergent to clean the cabinet, panel and controls.  
To avoid damage, do not use solvents to clean this equipment.

## Controls



- |                         |                          |                           |
|-------------------------|--------------------------|---------------------------|
| 1. Fig.8 mains inlet    | 5. Bluetooth play button | 9. Bass EQ control        |
| 2. Mains fuse holder    | 6. Bluetooth indicator   | 10. Line output XLRM      |
| 3. Power on/off switch  | 7. Volume control        | 11. Mic input XLRF        |
| 4. Bluetooth off/volume | 8. Treble EQ control     | 12. Line input 6.3mm jack |

## Operation

Connect any line input (CD, mp3 player, home keyboard etc.) to the QXBT speaker via the 6.3mm jack line input (12) or alternatively, connect a microphone to the XLR mic input (11)

Turn the VOLUME control (7) fully down and turn the POWER switch (3) on. BASS and TREBLE controls (8, 9) should remain pointing vertically (12-o-clock position).

Turn up the VOLUME control part way and test the input signal (line or microphone) for output through the speaker. Adjust the VOLUME to the required output level and TREBLE and BASS controls to adjust the overall tone of the output (clockwise to boost, anti-clockwise to cut).

## Bluetooth™ Connection

QXBT units are fitted with a Bluetooth receiver, which is operated via a rotary control (4) and play button (5) on the rear panel. When the rotary control is turned fully off, power to the Bluetooth receiver is off.

If switched off, turn the Bluetooth rotary control clockwise to switch power on to the Bluetooth receiver. Turning the rotary control up increases Bluetooth output level – halfway is a reasonable position to start. Press and hold the Bluetooth play button for 3 seconds and the Bluetooth indicator (6) will flash blue. If the playback source is already paired, the connection will be made with the QXBT speaker and a chime will sound to confirm this.

If not paired, press the play button briefly again to see the LED flash between blue and red. At this point, the Bluetooth receiver is made visible to all Bluetooth devices in range. Scan for Bluetooth devices on your playback source and check for a device called "bluetooth" (lower case). Select this device and opt to connect and your sending device should state that it is connected to "bluetooth" for audio output and the LED should flash blue and a beep will confirm the pairing. Play audio from your sending device and check for output through the QXBT speaker.

If there is no output from Bluetooth, check if there is more than one device in range called "bluetooth". In the eventuality that more than one device is called "bluetooth", try each device in turn until the QXBT unit is found. Check also that the volume level is turned up on the sending device.

Once audio is playing through the QXBT speaker from Bluetooth, adjust the rotary control (4) to the required volume.

The QXBT speaker's Bluetooth receiver has duplex Play/Pause control over the sending device. Press the Bluetooth button on the rear panel to remotely pause or resume playback from the sending device. This is useful when the audio is played from a phone in a pocket or on an armband or from a PC or Mac computer.

Bluetooth on the QXBT speaker can only pair to a single device at any one time and should be operable over a range of 5 to 8 metres.

Turning the rotary control fully down clicks the power off and shuts down the Bluetooth receiver.

## Specifications

Model	QX8BT	QX10BT
Power supply	230Vac, 50Hz (fig.8)	
Main driver	200mm (8")	250mcm (10")
Main driver coil size	35mm	52mm
HF unit	25mm (1") titanium compression driver	
Impedance	4Ω	
Inputs	Line (6.3mm jack), Mic (XLR)	
Bluetooth version	v2.1	
Dispersion	90° x 60° (H x V)	
Output power RMS	100W	150W
Output power Max.	200W	300W
SNR	87dB	
THD	0.1%	
SPL @ 1W/1m	94dB	97dB
Max SPL	117dB	121dB
Crossover frequency	4kHz	
Frequency response	55Hz – 20kHz	48Hz – 20kHz
Dimensions	290 x 400 x 225mm	320 x 470 x 270mm
Weight	6.8kg	8.0kg



**Disposal:** The "Crossed Wheelie Bin" symbol on the product means that the product is classed as Electrical or Electronic equipment and should not be disposed with other household or commercial waste at the end of its useful life. The goods must be disposed of according to your local council guidelines.

*Errors and omissions excepted.  
Copyright© 2014. AVSL Group Ltd.*